

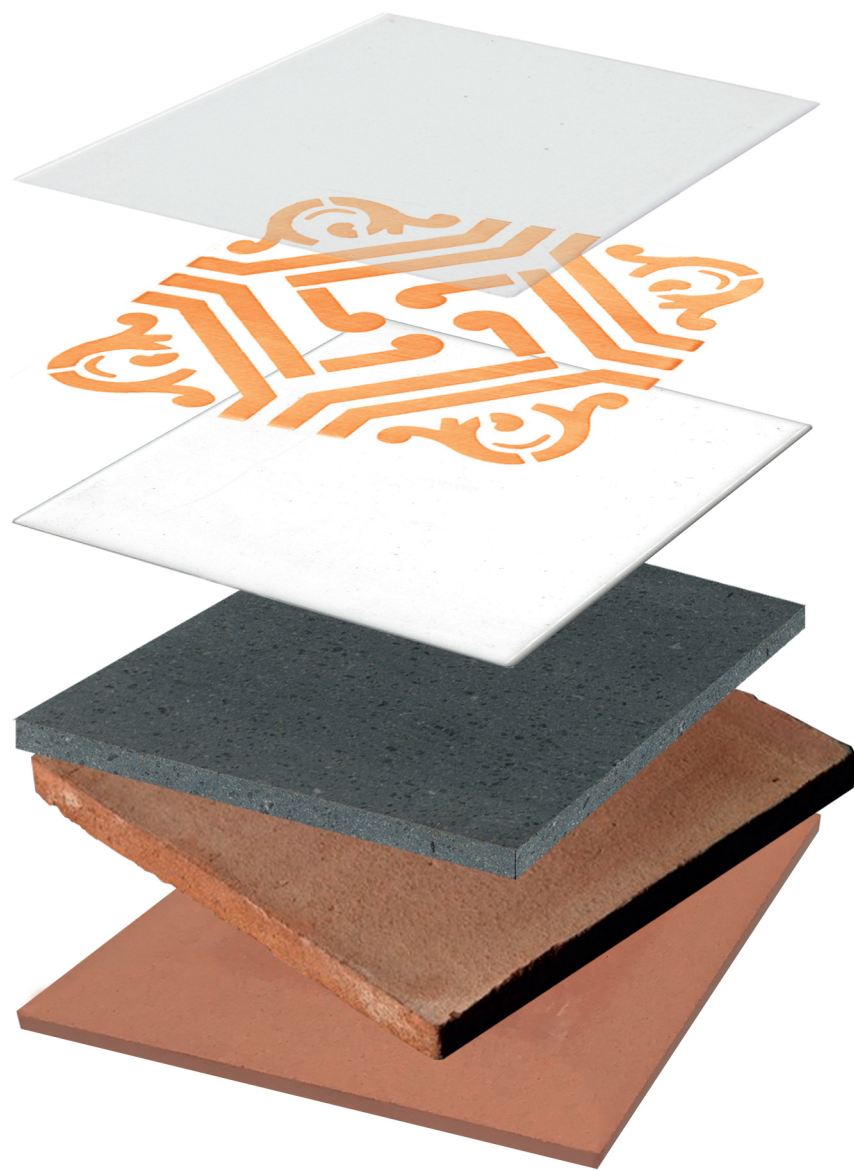
How to build your tiles, slabs or elements using the original hands of Made a Mano®™©

Made in Caltagirone - 100% Made in Italy



made a mano®™
Novaria Pannella

Manufacture tile process	03
Terracotta	04
Lavastone	05
Base glazes	
Panorama	07
Cristalli	08
Ossido	09
Color charts	
Color charts	11
K color chart	12
FM color chart	13
KN color chart	14
KT + KTL color charts	15
Series	
Classica	16
Contemporanea	18-21
Design	22-25
Sample of codification	26
Standard order sheet	27
Information about finishing and FAQ	28
QR code for catalogues download and web references	29



End glass finishing, glossy or semigloss

Pattern finishing and color choice (color chart)

Glazing color from Panorama / Cristalli / Ossido

Tile in lava stone PLL (smooth lava stone, plane surface) or PLA (bush hammered lava stone, rug surface)

CM- Manual cotto

CI- Industrial cotto

Guideline 002 - Cotto_ Material base

There are many types of cotto, and each one is unique in its own category. Our production stands out for the mixture: local clays together with basaltic sands give a final product with higher strength and quality. In the past it was a poor material used for building or covering, today it is a always more precious material and requested in construction industry. It is suitable for different uses by the restoration work to contemporary architecture, it is an extremely modern and versatile material and especially eco-friendly.

We realize three different types of cotto, each one has a different mechanical resistance and an its own color performance. It depends on the manufacturing, we distinguish these following types cotto as material base:



Natural raw clay



Raw clay tiles



CI - Industrial cotto (obtained by machine mold)

Glazed and hand decorated, it has a regular shape and it allows a greater ease of laying.



CM - Manual cotto (old school hand made)

It maintains intact the traditional working visible also after the glazing process.

Guideline 002 - Lava stone_Material base

It opens new horizons in architecture and in interior and exterior furniture, for its versatility and its thermal resistance it adapts to any temperature and it is not subject to thermal changes. Allowing to be worked in a single piece with different shapes and forms and reaching maximum sizes of ceramic processing of 150x300cm, Ø 160cm with various thicknesses.

We distinguish two categories:

PLA: Bush- hammered lava stone

PLL: Smooth lava stone, each one available in various deeper proposed or chosen finishes.

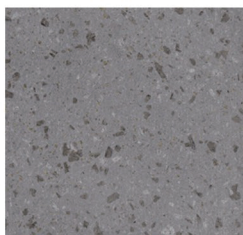
Moreover these finishes are not only a material base, look at Komon Natura or Komon Tatto, but they are part of a separate collection Nuda Lava.



Incandescent lava flow on Etna volcano



Rough lava stone slabs



PLL - Smooth lava stone

Natural sawn surface



PLA - Bush hammered lava stone

Natural finishing realized by machine process

Base glazes



P/8 bianco puro



P/7 bianco latte



P/27 sabbia



P/15 rosa



P/25 rosa antico



P/48 giallo



P/53 arancio



P/45 rosso



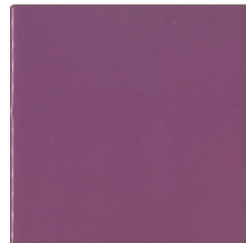
P/40 rosso antico



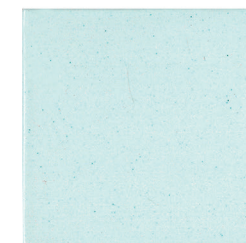
P/29 amaranto



P/49 glicine



P/23 lilla



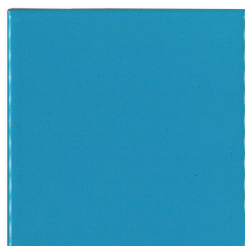
P/14 carta da zucchero



P/20 azzurro cielo



P/44 azzurro cielo



P/41 azzurro



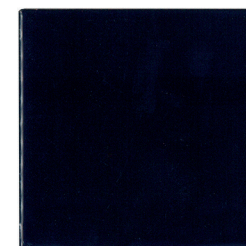
P/30 celeste scuro



P/52 blu antico



P/42 indaco



P/43 blu notte



P/9 verde foglia



P/50 verde chiaro



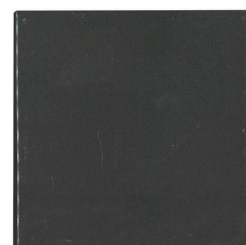
P/51 verde scuro



P/26 verde foglia



P/28 verde petrolio



P/32 grey



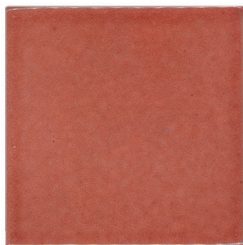
P/21 marrone



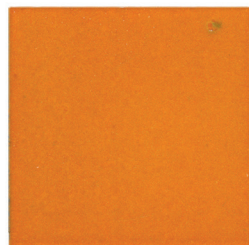
P/46 nero



C/9 rosa



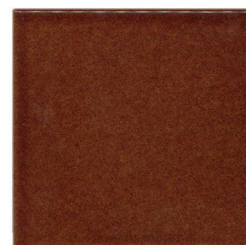
C/8 cognac



C/6 arancio



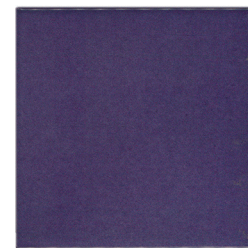
C/5 carminio



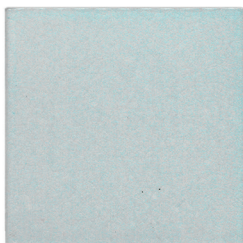
C/7 marrone



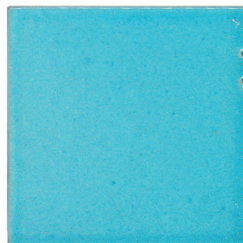
C/4 melanzana



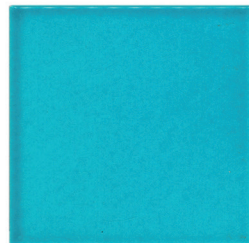
C/93 viola



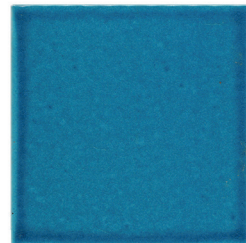
C/12 celeste chiaro



C/14 celeste scuro



C/30 turchese



C/11 blu cielo



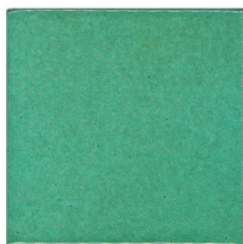
C/10 blu



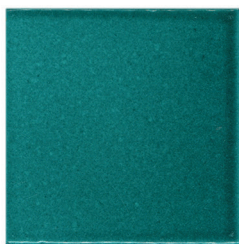
C/15 giallo verde



C/18 giallo paglia



C/3 verde bottiglia



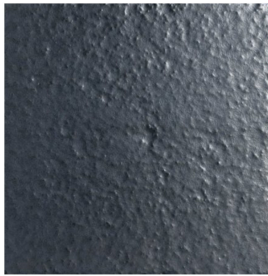
C/2 verde rame



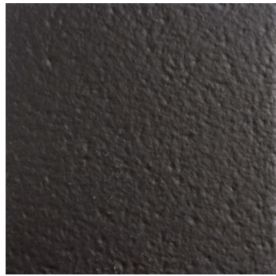
C/17 grigio



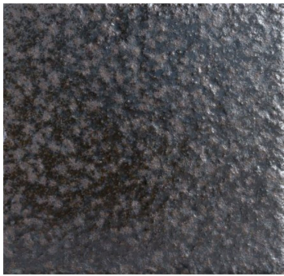
OSS/1 - PLA



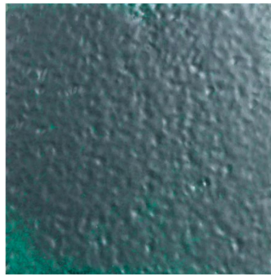
OSS/2 - PLA



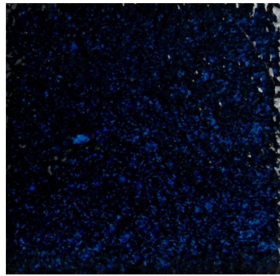
OSS/3 - PLA



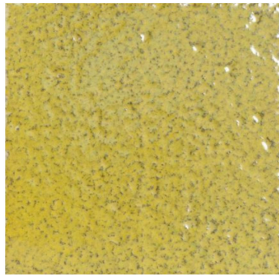
OSS/4 - PLA



OSS/10 - PLA



OSS/13 - PLA



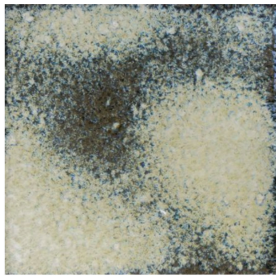
OSS/15 - PLA



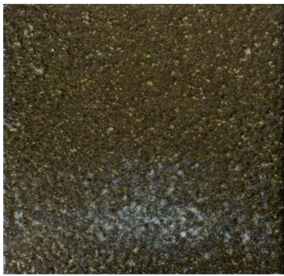
OSS/16 - PLA



OSS/23 - PLA



OSS/43 - PLA



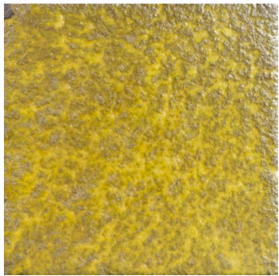
OSS/44 - PLA



OSS/46 - PLA



OSS/48 - PLA



OSS/50 - PLA



OSS/52 - PLA



OSS/53 - PLA



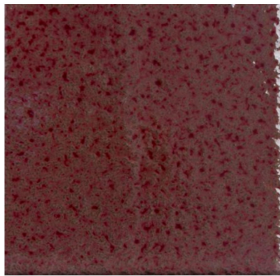
OSS/54 - PLA



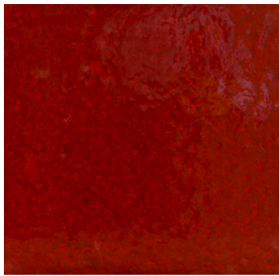
OSS/55 - PLA



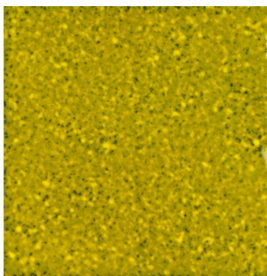
OSS/56 - PLA



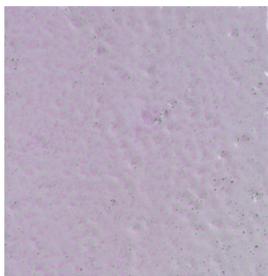
OSS/57 - PLA



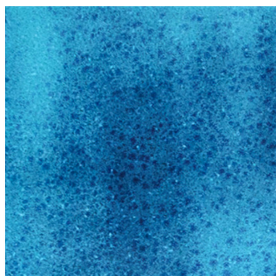
OSS/58 - PLA



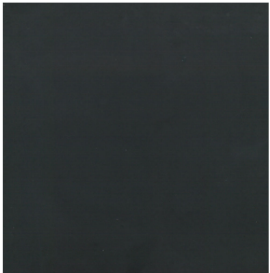
OSS/59 - PLA



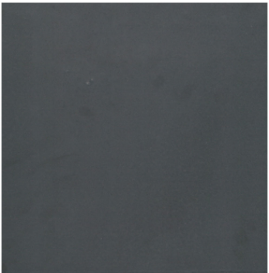
OSS/60 - PLA



OSS/61 - PLA



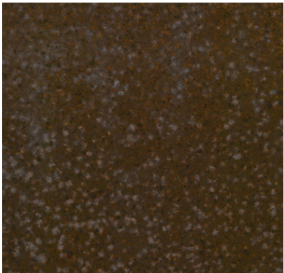
OSS/1 - PLL



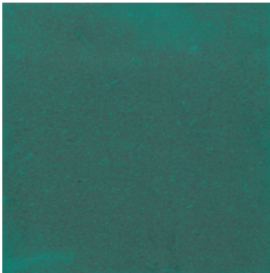
OSS/2 - PLL



OSS/3 - PLL



OSS/4 - PLL



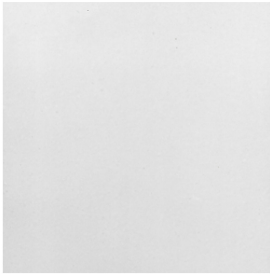
OSS/10 - PLL



OSS/13 - PLL



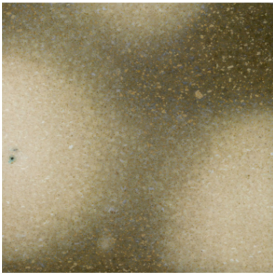
OSS/15 - PLL



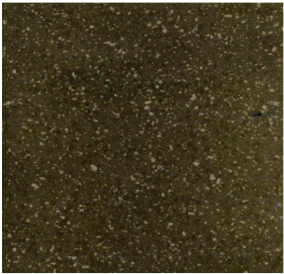
OSS/16 - PLL



OSS/23 - PLL



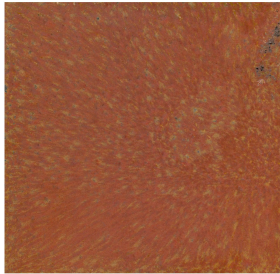
OSS/43 - PLL



OSS/44 - PLL



OSS/46 - PLL



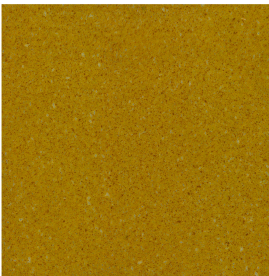
OSS/48 - PLL



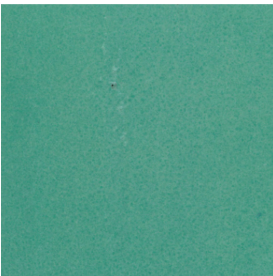
OSS/50 - PLL



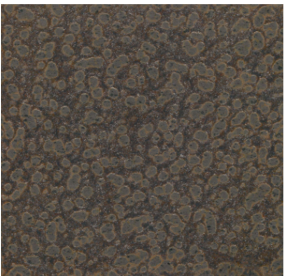
OSS/52 - PLL



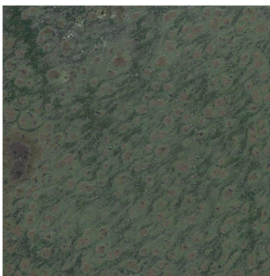
OSS/53 - PLL



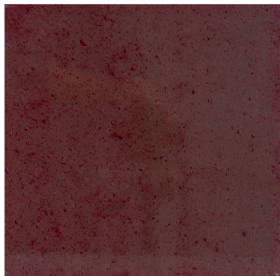
OSS/54 - PLL



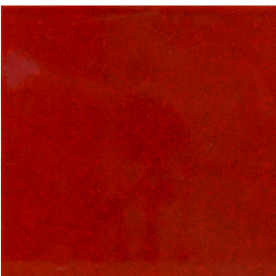
OSS/55 - PLL



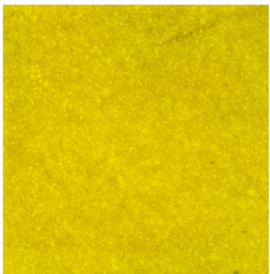
OSS/56 - PLL



OSS/57 - PLL



OSS/58 - PLL



OSS/59 - PLL



OSS/60 - PLL

Patterns color charts

K color chart

	SM36 Bianco
	SM28 Giallo
	SC30 Giallo
	SM1126 Arancio
	SM35 Arancio
	SC81 Carnacino
	Melanzana
	SC107 Seppia
	SM90 Rosa
	SM8 Carminio
	CAV2190 Rosso
	SC1266 Corallo
	CAV2180 Arancio
	SC1264 Viola
	SM62 Oro
	SM16 Verde
	SM72 Verde
	SM115 Verde
	SM12 Verde foglia
	SC43 Verde
	SM13 Smeraldo
	SM44 Verde rame
	SM10 Verde rame
	SM56 Verde marcio
	SC56 Turchese
	SM65 Blu antico
	CPM10 Blu Roma
	SM1 Blu
	SM32 Blu service
	SM119 Blu petrolio
	SC59 Grigio
	SM21 Marrone c.
	CPM6 Marrone s.
	SC14 Bruno
	SM24 Manganese
	SM69 Nero

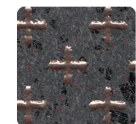
FM color chart

	SM28 Giallo
	SC30 Giallo
	SM35 Arancio
	SM1126 Arancio
	SC81 Carnacino
	SC107 Seppia
	SM90 Rosa
	SM8 Carminio
	SC1266 Corallo
	CAV2180 Selenio
	Melanzana
	SC1264 Viola
	SM21 Marrone
	SM16 Verde
	SM72 Verde
	SM1115 Marcio
	SM12 Foglia
	SC43 Verde
	SM13 Smeraldo
	SM9 Verde rame
	SM56 Verde marcio
	SM44 Verde rame
	SC59 Grigio
	SM65 Blu antico
	CPM10 Blu Romano
	SM119 Blu verde
	SM32 Blu royal
	SC56 Turchese
	SM62 Oro
	SC14 Bruno
	CPM12 Nero
	SM1 Blu
	CPM6 Marrone
	SM24 Manganese
	CAV2190 Selenio
	SM36 Bianco

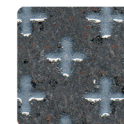
KN color chart

	SM36 Bianco
	SM28 Giallo
	SC30 Giallo
	SM1126 Arancio
	SM35 Arancio
	SC81 Carnacino
	Melanzana
	SC107 Seppia
	SM90 Rosa
	SM8 Carminio
	CAV2190 Rosso
	SC1266 Corallo
	CAV2180 Arancio
	SC1264 Viola
	SM62 Oro
	SM16 Verde
	SM72 Verde
	SM115 Verde
	SM12 Verde foglia
	SC43 Verde
	SM13 Smeraldo
	SM44 Verde rame
	SM10 Verde rame
	SM56 Verde marcio
	SC56 Turchese
	SM65 Blu antico
	CPM10 Blu Roma
	SM1 Blu
	SM32 Blu service
	SM119 Blu petrolio
	SC59 Grigio
	SM21 Marrone c.
	CPM6 Marrone s.
	SC14 Bruno
	SM24 Manganese
	SM69 Nero

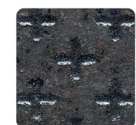
KT color chart



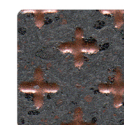
BRONZO



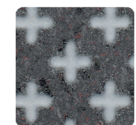
PERLATO



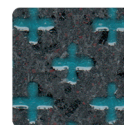
GLITTER BLACK



RAME ROSSO



SETOSA GLASS

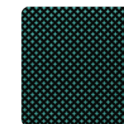


VETRO AZZURRO

KTL color chart



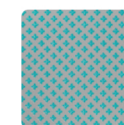
DAY - PLL



NIGHT - PLL



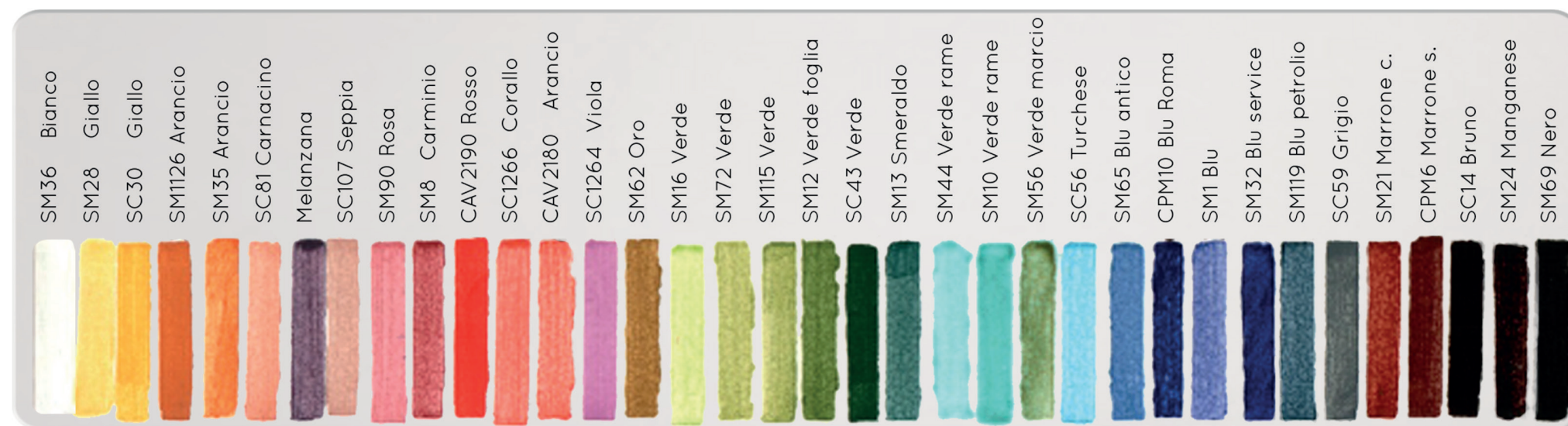
DAY - CI



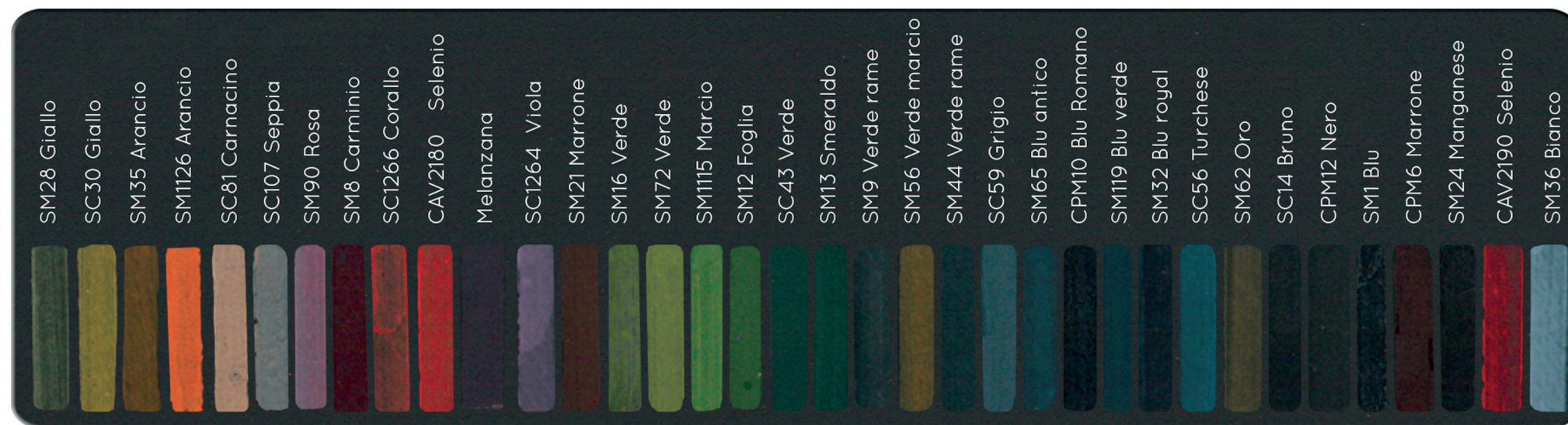
NIGHT - CI

Color base P/ 7 shiny

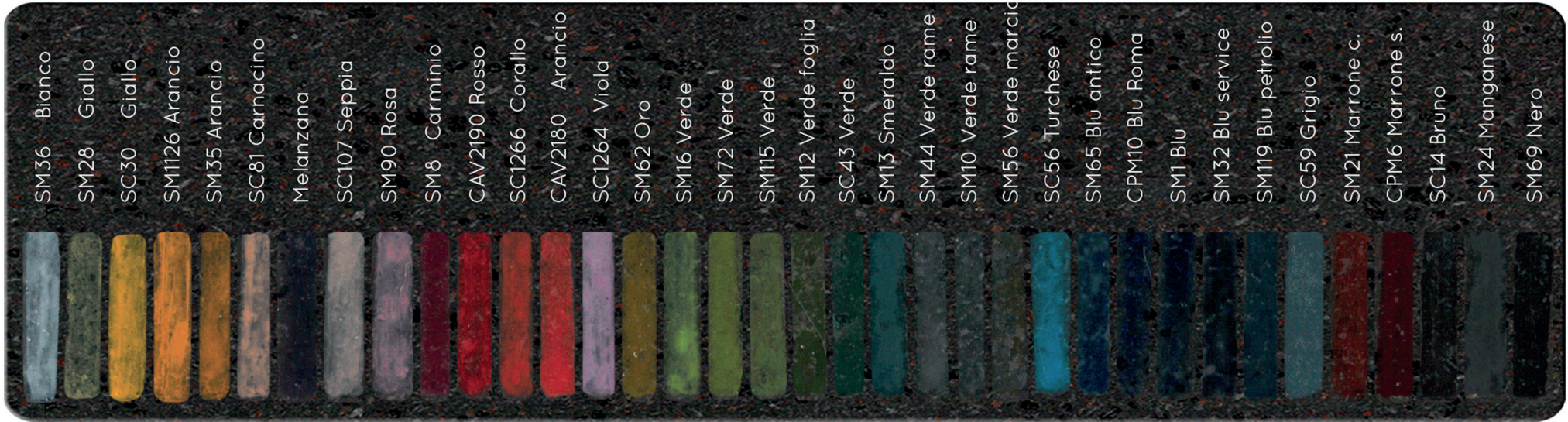
Used in Alfa, Novecento, New Decorations, Mediterraneo, Bench, My Table, Funghetti, Luna, Exagon Table, Sensu, Cunei, Sardine, Kaluri, Isole, Dot's, Makè, Luce, madeTerraneo, Minà



Color base black matte
 Used in Fatti a Mano



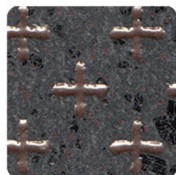
Color base natural lava stone
Used in Komon Natura, My Table, Funghetti, Luna, Exagon Table,
Sensu, Kaluri, Isole, Makè, Luce, Magma



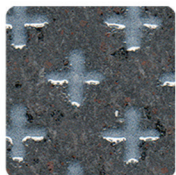
Guideline 002 - KT + KTL color charts

KT color chart

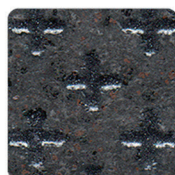
Fusion of metals on relief on natural lava stone base
 Used in Komon Tatto, Senu, Luna, My Table



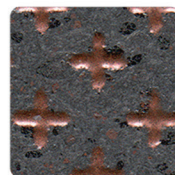
BRONZO



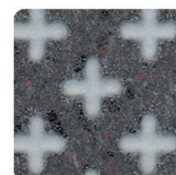
PERLATO



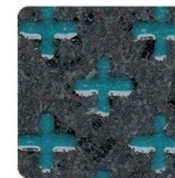
GLITTER BLACK



RAME ROSSO



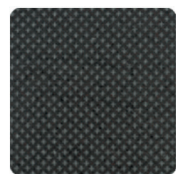
SETOSA GLASS



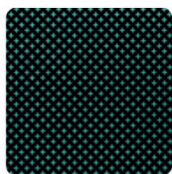
VETRO AZZURRO

KTL color chart

Fusion of luminescent metals on relief on natural lava stone or P/ 7 shiny base
 Used in Komon Tatto Luminescent, Luce



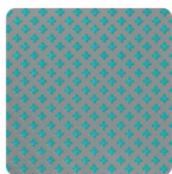
DAY - PLL



NIGHT - PLL

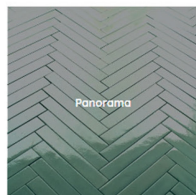


DAY - CI



NIGHT - CI

Serie Classica



Panorama

Materials

CI / CM / PLL / PLA

Sizes

Look at the catalogue/website
 Customized sizes on request

Base glazes

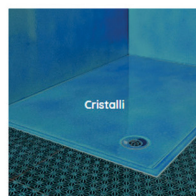
Refer to Panorama base glazes
 Other colors on request

Decorations

Not available

Color decorations

Standard not available



Cristalli

Materials

CI / CM / PLL / PLA

Sizes

Look at the catalogue/website
 Customized sizes on request

Base glazes

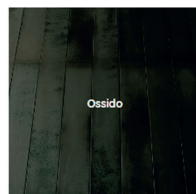
Refer to Cristalli base glazes
 Other colors on request

Decorations

Not available

Color decorations

Standard not available



Ossido

Materials

PLL / PLA

Sizes

Look at the catalogue/website
 Customized sizes on request

Base glazes

Refer to Ossido base glazes
 Other colors on request

Decorations

Not available

Color decorations

Standard not available



Komon

Materials

CI / CM / PLL / PLA

Sizes

Look at the catalogue/website
 Customized sizes on request

Base glazes

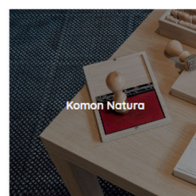
Refer to Panorama base glazes
 Ex. P/7 bianco latte
 Other colors on request

Decorations

Decorations code
 Ex. K/11

Color decorations

Look at K color chart
 Ex. SM119 Blu petrolio



Komon Natura

Materials

PLL / PLA

Sizes

Look at the catalogue/website
 Customized sizes on request

Base glazes

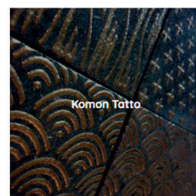
Natural lava stone

Decorations

Decorations code
 Ex. KN/11

Color decorations

Look at KN color chart
 Ex. SC 56 Turchese



Komon Tatto

Materials

PLL / PLA

Sizes

Look at the catalogue/website
 Customized sizes on request

Base glazes

Natural lava stone

Decorations

Decorations code
 Ex. KT/11

Color decorations

Look at KT color chart
 Bronzo

Serie Contemporanea



Alfa

Materials

CI / PLL

Sizes

Look at the catalogue/website
 Customized sizes on request

Base glazes

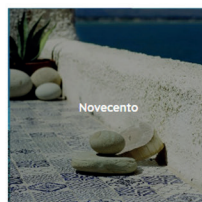
White or ref. to Panorama glazes
 Natural lava stone
 Other colors on request

Decorations

Letter

Color decorations

Black on white glazes
 White on natural lavastone



Novecento

Materials

CI / CM / PLL / PLA

Sizes

Look at the catalogue/website
 Customized sizes on request

Base glazes

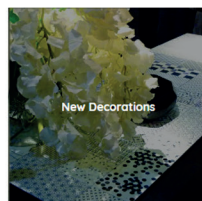
Refer to Panorama base glazes
 Ex. P/7 bianco latte
 Other colors on request

Decorations

Decorations code
 Ex. NC/ 7

Color decorations

Look at K color chart
 Ex. SM119 Blu petrolio



New Decorations

Materials

CI / CM / PLL / PLA

Sizes

Look at the catalogue/website
 Customized sizes on request

Base glazes

Refer to Panorama base glazes
 Ex. P/7 bianco latte
 Other colors on request

Decorations

Decorations code
 Ex. ND/ 7

Color decorations

Look at K color chart
 Ex. SM119 Blu petrolio



Fatti a Mano

Materials

CI / CM / PLL / PLA

Sizes

Look at the catalogue/website
 Customized sizes on request

Base glazes

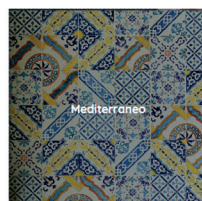
Matt black

Decorations

Decorations code
 Ex. FM/ 13

Color decorations

Look at FM color chart
 Ex. SM119 Blu verde



Mediterraneo

Materials

CI / CM / PLL / PLA

Sizes

Look at the catalogue/website
 Customized sizes on request

Base glazes

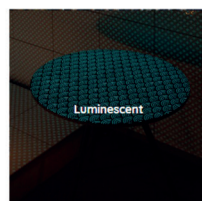
Refer to Panorama base glazes
 Ex. P/7 bianco latte
 Other colors on request

Decorations

Decorations code
 Ex. M/ 4

Color decorations

Yellow- Orange
 Copper green- Old blue
 Other colors on request



Komon Tatto Luminescent

Materials

CI / PLL / PLA

Sizes

Look at the catalogue/website
 Customized sizes on request

Base glazes

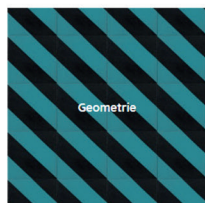
Natural lava stone
 P/ 8 bianco puro
 Other colors on request

Decorations

Decorations code
 Es. KT/11

Color decorations

Luminescent glass



Geometrie

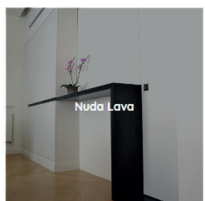
Materials
PLL / PLA

Sizes
Look at the catalogue/website
Customized sizes on request

Base glazes
Natural lava stone

Decorations
Decorations code
Ex. G / 1

Color decorations
Ref. to Panorama- Cristalli- Ossido



Nuda Lava

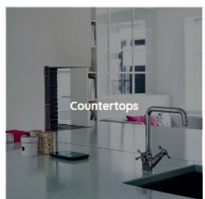
Materials
PLL / PLA

Sizes
Look at the catalogue/website
Customized sizes on request

Base glazes
Natural lava stone

Decorations
Decorations code
Ex. N/ 1

Color decorations
Not available



Countertops

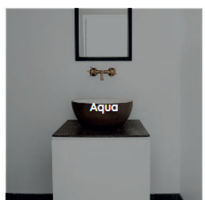
Materials
PLL / PLA

Sizes
Look at the catalogue/website
Customized sizes on request

Base glazes
Natural lava stone
Ref. to Panorama- Cristalli- Ossido
Other colors on request

Decorations
Standard not available

Color decorations
Standard not available



Aqua

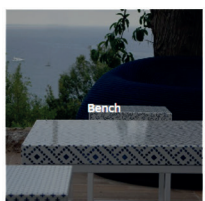
Materials
PLL / PLA

Sizes
Look at the catalogue/website
Customized sizes on request

Base glazes
Natural lava stone
Ref. to Panorama- Cristalli- Ossido
Other colors on request

Decorations
Standard not available

Color decorations
Standard not available



Bench

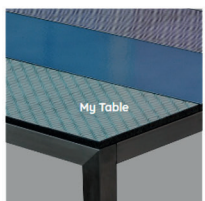
Materials
PLL / PLA + steel structure

Sizes
Look at the website
Customized sizes on request

Base glazes
Natural lava stone
Ref. to Panorama- Cristalli- Ossido
Other colors on request

Decorations
All collections available

Color decorations
Look at K- FM- KN- KT- KTL
color charts



My Table

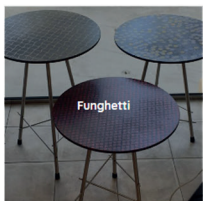
Materials
PLL / PLA + steel structure

Sizes
Look at the catalogue/website
Customized sizes on request

Base glazes
Natural lava stone
Ref. to Panorama- Cristalli- Ossido
Other colors on request

Decorations
All collections available

Color decorations
Look at K- FM- KN- KT- KTL
color charts



Funghetti

Materials

PLL / PLA + steel structure

Sizes

Look at the website
 Customized sizes on request

Base glazes

Natural lava stone
 Ref. to Panorama- Cristalli- Ossido
 Other colors on request

Decorations

All collections available

Color decorations

Look at K- FM- KN- KT- KTL
 color charts



Luna

Materials

PLL / PLA + steel structure

Sizes

Look at the website
 Customized sizes on request

Base glazes

Natural lava stone
 Ref. to Panorama- Cristalli- Ossido
 Other colors on request

Decorations

All collections available

Color decorations

Look at K- FM- KN- KT- KTL
 color charts



exagonTable

Materials

PLL / PLA + steel structure

Sizes

Look at the catalogue/website
 Customized sizes on request

Base glazes

Natural lava stone
 Ref. to Panorama- Cristalli- Ossido
 Other colors on request

Decorations

All collections available

Color decorations

Look at K- FM- KN- KT- KTL
 color charts

Serie Design



Righe

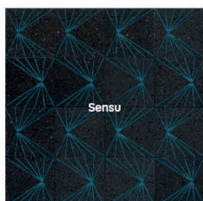
Materials
 PLL / PLA

Sizes
 Look at the catalogue/website
 Customized sizes on request

Base glazes
 Natural lava stone

Decorations
 Standard not available

Color decorations
 Standard not available



Senu

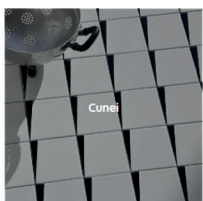
Materials
 CI / CM / PLL / PLA

Sizes
 Look at the website
 Customized sizes on request

Base glazes
 Natural lava stone
 Ref. to Panorama- Cristalli- Ossido
 Other colors on request

Decorations
 Decoration code
 Ex. S/ 1; SN/1; SKT/1; SKTL/1

Color decorations
 Look at K- FM- KN- KT- KTL
 color charts



Cunei

Materials
 CI / PLL

Sizes
 Look at the website
 Customized sizes on request

Base glazes
 Ref. to Panorama- Cristalli- Ossido
 Other colors on request

Decorations
 Decoration code
 Ex. CN/2

Color decorations
 Standard black
 Other colors on request



Prisme

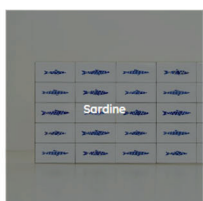
Materials
 PLL / PLA

Sizes
 Look at the catalogue/website
 Customized sizes on request

Base glazes
 Natural lava stone

Decorations
 Decoration code
 Ex. PR/1

Color decorations
 Ref. to Panorama- Cristalli- Ossido
 Other colors on request



Sardine

Materials
 CI / PLL

Sizes
 Look at the website
 Customized sizes on request

Base glazes
 Ref. to Panorama- Cristalli- Ossido
 Other colors on request

Decorations
 Decoration code
 Ex. SR/1

Color decorations
 Look at K color chart



Kaluri

Materials
 PLL / PLA

Sizes
 Look at the catalogue/website
 Customized sizes on request

Base glazes
 Natural lava stone
 Ref. to Panorama- Cristalli- Ossido
 Other colors on request

Decorations
 All collections available

Color decorations
 Look at K- FM- KN- KT- KTL
 color charts



Isole

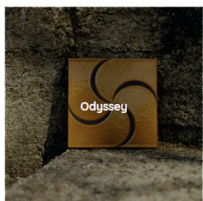
Materials
PLL

Sizes
Look at the website
Customized sizes on request

Base glazes
Natural lava stone

Decorations
Look at the website

Color decorations
Look at K- KN color charts



Odyssey

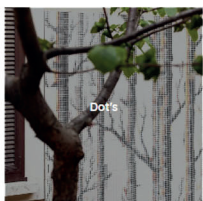
Materials
PLL

Sizes
Look at the website
Customized sizes on request

Base glazes
Natural lava stone

Decorations
Decoration code
Ex. Ulisse; Sirene; etc.

Color decorations
Ref. to Panorama- Cristalli- Ossido
Other colors on request



Dot's

Materials
CI/ CM / PLL / PLA

Sizes
Look at the catalogue/website
Customized sizes on request

Base glazes
Ref. to Panorama- Cristalli- Ossido
Other colors on request

Decorations
On project

Color decorations
Look at K color chart



Makè

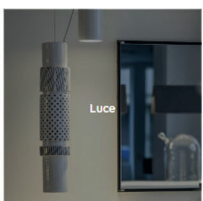
Materials
PLL / PLA

Sizes
Look at the website
Customized sizes on request

Base glazes
Natural lava stone
Ref. to Panorama- Cristalli- Ossido
Other colors on request

Decorations
Decoration code
Ex. Mak/1

Color decorations
Look at K- KN color charts



Luce

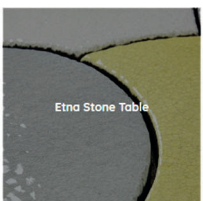
Materials
CI / PLL

Sizes
Look at the website
Customized sizes on request

Base glazes
Ref. to Panorama- Cristalli- Ossido
Other colors on request

Decorations
All collections available

Color decorations
Look at K- KN -KTL color charts



Etna Stone Table

Materials
PLL / PLA

Sizes
Look at the website
Customized sizes on request

Base glazes
Ref. to Panorama- Cristalli- Ossido
Other colors on request

Decorations
Standard not available

Color decorations
Standard not available



Magma

Materials

Look at the website

Sizes

Look at the website

Base glazes

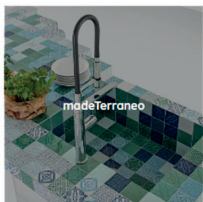
Look at the website

Decorations

Look at the website

Color decorations

Look at the website



madeTerraneo

Materials

Look at the website

Sizes

Look at the website

Base glazes

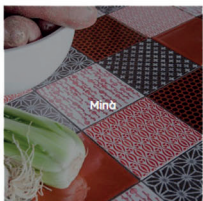
Look at the website

Decorations

Look at the website

Color decorations

Look at the website



Minà

Materials

Look at the website

Sizes

Look at the website

Base glazes

Look at the website

Decorations

Look at the website

Color decorations

Look at the website



Material base chosen
Standard size chosen

PLL - smooth lava stone
10x10x1 - size in centimeters

Glaze base chosen

P/8 bianco puro - from Serie Classica, Panorama collection

Pattern chosen
Color of the pattern chosen

NC/5 - from Serie Contemporanea, Novecento collection
SM 35 Arancio - from K color chart

The final request code

PLL - 10X10X1 - P/ 8 - NC/ 7 - SM 35 Arancio

MATERIAL BASE


CI Industrial cotto


CM Manual cotto


PLL Smooth lava stone

PLA Bush hammered lava stone

SIZES

 **CI**
 40X40
 30X30
 20X20
 15X15
 10X10

 **CM**
 30X30
 20X20
 15X15
 10X10

 **PLL - PLA**
 80x80
 60x60
 50x50
 40X40
 30X30
 20X20
 15X15
 10X10

1 < CI thickness <1,3

1,2 < CM thickness <2,5

1 < PLL- PLA thickness <2

Other sizes on request





PANORAMA GLAZES BASE

 P/7 bianco latte
 P/8 bianco candido
 P/9 giallo paglia
 P/14 verde acqua
 P/15 rosa
 P/20 carta da zucchero

 P/21 marrone
 P/23 lilla
 P/25 rosa antico
 P/26 verde foglia
 P/27 sabbia
 P/28 verde petrolio

 P/29 amaranto
 P/30 celeste scuro
 P/32 grey
 P/40 rosso antico
 P/41 azzurro
 P/42 indaco

 P/43 blu notte
 P/44 azzurro cielo
 P/45 rosso
 P/46 nero
 P/48 giallo
 P/49 glicine

 P/50 verde chiaro
 P/51 verde mela
 P/52 blu antico
 P/53 arancio

NOVECENTO PATTERN CODE

NC/1	NC/4	NC/7	NC/12	NC/15	NC/18	NC/21	NC/24	NC/27	NC/30	NC/33	NC/36	NC/39
NC/2	NC/5	NC/8	NC/13	NC/16	NC/19	NC/22	NC/25	NC/28	NC/31	NC/34	NC/37	
NC/3	NC/6	NC/9	NC/14	NC/17	NC/20	NC/23	NC/26	NC/29	NC/32	NC/35	NC/38	

PATTERN COLOR CODE

 SM36 Bianco
 SM28 Giallo
 SC30 Giallo
 SM1126 Arancio
 SM35 Arancio
 SC81 Carnacino
 Melanzana

 SC107 Seppia
 SM90 Rosa
 SM8 Carminio
 CAV2190 Rosso
 SC1266 Corallo
 CAV2180 Arancio
 SC1264 Viola

 SM62 Oro
 SM16 Verde
 SM72 Verde
 SM115 Verde
 SM12 Verde foglia
 SC43 Verde
 SM13 Smeraldo

 SM44 Verde rame
 SM10 Verde rame
 SM56 Verde marcio
 SC56 Turchese
 SM65 Blu antico
 CPM10 Blu Roma
 SM1 Blu

 SM32 Blu service
 SM119 Blu petrolio
 SC59 Grigio
 SM21 Marrone c.
 CPM6 Marrone s.
 SC14 Bruno
 SM24 Manganese
 SM69 Nero

PRODUCTION CODE

1. Material base

2. Size

3. Glaze base

4. Pattern code

5. Color pattern code

--	--	--	--	--



Guideline 002 _ Information about lava stone and FAQ

Characteristics about ceramic and lava stone of the Etna Volcano of MADEAMANO®™©

LAVA STONE CHARACTERISTICS

The lava stone is a basalt stone coming from the solidified magma in contact with water and air. In our case the only source of lava stone is from Volcano Etna's (Sicily), about 60 km from our company. We distinguish two processes:

Code **PLL**: smooth lava stone

Code **PLA**: bush hammered lava stone

Both available in different techniques and collections.

GLAZED LAVA STONE, MAJOLICA, CERAMIC OR VITRIFIED

The ceramized lava stone is a fusion technique between lava basalt and ceramic pigments at high temperatures (1000 ° C and up), which can be managed with manual techniques, with decorations and colors, by skilled Ceramic Masters.

THE COTTO

It is a mixture of various types of clays, rich in: iron (red body), kaolin (white paste), stoneware, porcelain, etc.

Code **CI**: Industrial Cotto, made by mechanical procedures

Code **CM**: manual Cotto, entirely handmade, with the addition of volcanic dusts.

GLAZES AND CERAMIC COLORS

Normally they are mineral powders that brought to high temperatures (from 1000 ° C and up) together with the materials (brick or lava stone) go to melting. At the end of fusion, they reach a state of perfect adhesion so as to identify themselves as a single element, commonly called ceramic product.

CRAQUELÉ / CAVILLO ON LAVA STONE

All glazes on lava stone over time form the craquelé, in the dark glazes is not very clear (though it is), in the clear ones is more visible. This effect is due to the fact that the lava stone is a material suitable for thermal expansion and moves to the surface layers- glaze/decorations (1000° melting)- this feature too. Fundamental and decisive in order to have a product with exceptional characteristics in terms of adaptation to climatic conditions and / or thermal failures, avoiding breakages or damages of the product for its use and for its unlimited duration over time. In other words, this is not a defect of the material but a detail which makes it unique and suitable to any application.

GREEN SPOTS ON GLAZED, MAJOLICA AND CERAMIZED SURFACES ON LAVA STONE

On all lava stone surfaces made with white ceramic glaze or clear glazes (as Oss/16 – P/7 – P/8 etc.) some small green spots might take shape on the surface during melting (1000°) on the white glaze, caused by the reaction of small copper oxide concentrations which are in lava stone. This process, already occurred, as magma, cannot be controlled or handled by humans- so it is normal (then it cannot be disputable) within 1 cm. Over this size, Made a Mano Srl does over the product which gets this natural imperfection.

COPPER GREEN COLOR

You need to know that when the colours of the patterns are: verde rame SM10, SM44 and SM9, the tiles have a particular effect and you can see the “hand-made” a lot. Usually the “Made a Mano” handmade look shows that the tiles are “hand-painted”, so you can see the sign of the brush in the pattern, making some colorful shades. This effect is more clear in colours like copper, so it causes a chemical reaction in fusion with the base glaze, giving visibility to this special effect, the same think does not occur with other colours (like black, red, brown, etc since they are more permanent). The chemical reaction occurs during the fusion ceramic procedure (1000°) which is into the ovens and it cannot be managed by us.

NOTE: Please remember that the materials are naturally extracted and then turned into finished products through ceramic procedures by craftsmen and they may have different tones, shades and finishes compared to the sample you own.

COLORS AND GLAZE OF FINISHED PRODUCTS

Let's remind, that we work natural materials and not plastic or automotive paints. Of course the materials are extracted and processed "on purpose" in fusion (1000 °C) with as many natural mineral products that choice does not contain lead or radioactive materials.

The finished product, for different "combined factors" as atmosphere, seasons, relative humidity, ambient temperature or cooking, during processing, can in the end, to obtain a different result from the same product / decor worked months before.

For what we always ask the customer to have the samples of the product purchased or approve sample of the product required, since the nuances tolerances are very high compared to an applied paint on metal.

RECOMMENDING BEFORE, DURING, AFTER THE INSTALLATION

Many manuals and many specialized companies provide, including the internet, details and care before and after installation. Laying the lava stone and terracotta Made a Mano tiles, requires specialized and skilled labour for laying and cutting, appropriate tools and good experience. In short we suggest: for cutting the lava stone tiles it is mandatory to use a diamond cutting disc that will be used, by experienced and qualified persons with appropriate protection (goggles, masks and gloves as international law).

For laying always use an industrial adhesive for granite, rather than traditional mortar suggest <http://www.mapei.com/IT-EN/Products-for-Ceramics-and-Stone-Materials/Hydraulic-setting-adhesives/GRANIRAPID>

To maintain the distance of the joints, spacers in different sizes, or to the adjustable level spacers, they are now in common use, for each qualified installer. The same for any poses with corner or expansion joints incorporated in the floors or facades finish.

To cover the drain or fill, a similar suggestion not to use concrete in general that may cause the efflorescence of saltpetre, but we suggest using proven products now available in a veritable rainbow of colors, <http://www.mapei.com/IT-EN/Products-for-Ceramics-and-Stone-Materials/Hydraulic-setting-grouts/KERACOLOR-FF> and in the presence of substantial foot traffic or any temperature stress, use as an additive in addition Mapei-Fugolastic. Any other information can be found at site <http://www.mapei.com/IT-EN/systems-scheme.asp?IDSistemaTI-po=39&IDSottoSistema=148&IDSistema=11240>

Follow the mixing instructions and pose, by applying on the whole surface and not only on the junction lines. To remove excess grout, remove immediately with a damp sponge not bathed, cleaned or rinsed several times. To the left on the surface excess (patina) and relative cleaning, remove, within 4 hours after application of the escape (to the touch must be dusty and not wet). In case of accidental presence of saltpetre or efflorescence, past the wall to the tile surface and accidental presenting themselves a few days after installation and run, use with proper precautions <http://www.mapei.com/IT-IT/products-search-results.asp> for cleaning.

MAINTENANCE AND CLEANING

For regular cleaning and maintenance of tiles Made in hand, they both with ceramic support that lava stone tiled / glazed, used for floors, a washer dryer cloth with warm water and mild soap. For any extra anti-bactericidal in the bathroom or kitchen, use in addition AMUCHINA or antibacterial equivalents. Do not use abrasive powders, or chemical solvents.

In the kitchen (back-splash) or walls of the kitchen, in contact with fats / oils, using the same mixture (water / soap) using for cleaning a common Scotch-Brite® sponge and at least once a month to add water to the mixture / soap, a good deal <http://www.bicarbonato.it/it/index.html> . For final cleaning and drying, in the case of once a month, must be carried out with a damp cotton cloth that does not leave filaments, rinsed in a mixture of 80% water and 20% of white wine vinegar and then dry with a dry cloth (cotton or wool) that does not leave filaments.

ENDING CONSIDERATIONS

Since our products are hand-made can have a difference of shades of color, we recommend to pre-select the tiles, and compose on the ground the plane or to be fixed facade, before their installation on site, which will start from the bottom upwards, whereas for the final pose of measures, also the spaces of the joints and any cuts, which will be carried out during the laying and not in the first.

Finally, we strongly advise against using a mixture, sand, water and cement, also poses outside. Surely during drying, you could create a visible effect of white efflorescence (saltpeter) on the tile surface, in each case removable (when the entire surface will be dried- about 2 months after laying) with the application of chemical agents, Keranet or muriatic acid and water (see as suggested procedure using Mapei- Keranet).

Disclaimer and final notes on the names and brands used: MAPEI® – AMUCHINA® – SOLVAY® – WURTH® – SCOTCH-BRITE® and their names or brands mentioned are the property of the company and are suggested by Made a Mano, for proven efficiency and effectiveness.

Made a Mano Srl is not responsible for the installation or use, or the consequences in the misuse or improper use of the suggested materials.



Download our catalogues



Visit our website www.madeamano.it

Made a Mano Srl
Via Manfredi Modica, 4/c
95041 Caltagirone (Catania) Italy
tel. 0933 58189 - fax.0933 53482
info@madeamano.it

"The sole producer of Made a Mano® in the whole world"